

EUROPEAN SOCKETS

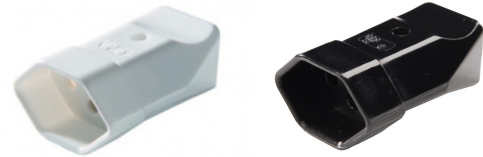
19-1342: SWISS COUPLING SOCKET

TYPE 13/10 AMP WITH EARTHING CONTACT



A portable socket-outlet type J (CH-T13), with earthing contact and shutter. Rewirable for use with H05VV-F 3x 1,5 mm² cable.

The socket itself is made of Polyamide 6, rated at 250V, 10A, rated to IP20, Manufactured to IEC 60884-1, SN 441011 specifications. The socket is wired through screw terminals, which are manufactured with CuZn37. The socket is for use with H05VV-F 3x 1,5 mm² cable to rewire on a Swiss socket.



- Swiss Insulated Rewirable Socket
- Type J
- Ratings: 250 V~, 10A, IP20
- Approved: IEC 60884-1, SN 441011
- REACH and ROHS2 compliant

SWISS

SOCKET

TYPE J

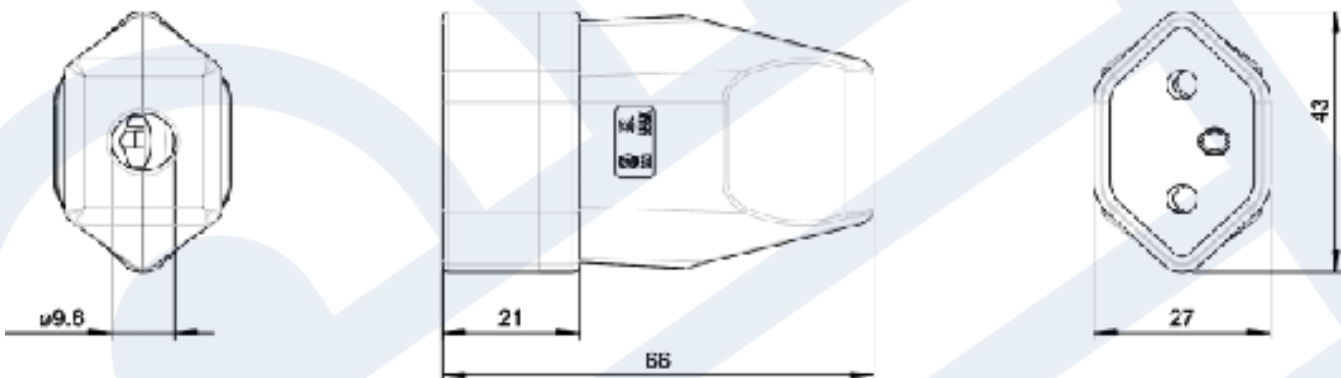
SPECIFICATIONS

Rating Voltage	250V
Rated Current	10A
Kind of Construction	IEC 60884-1, SN 441011
Ambient temperature	tmin: -5°C; tmax: +40°C; max. ϕ 35°C @ 24 h
Degree of protection	IP20

MATERIALS

Type of terminals	Screw terminals
Material of terminals	CuZn37
Carrying parts	Polyamide 6
Cover	Polyamide 6
Cable Type:	Supply line:H05VV-F 3G1,5 mm ² .

DIMENSIONS



EUROPEAN SOCKETS

19-1342: SWISS COUPLING SOCKET TYPE 13/10 AMP WITH EARTHING CONTACT



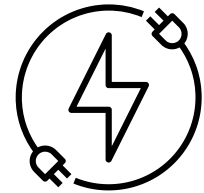
RECOMMENDED TORQUE FOR

Terminals L+N:	0,6 Nm
Terminal PE:	0,6 Nm
Cable clamp:	0,4 Nm
Cover:	0,4 Nm

WARNINGS:



- Do not plug in a row
- Do not operate covered.
- Voltage-free only when the plug is pulled out
- For use in dry conditions only



- Improper installation puts you at risk:
 - own life;
 - the lives of the users of the electrical system.
- With improper installation you risk serious property damage, e.g. B. by fire.
- You are at risk of personal liability for personal injury and property damage.

REQUIRED SPECIALIST KNOWLEDGE FOR INSTALLATION

The following specialist knowledge is particularly required for installation:

- The "5 safety rules" to be applied: Isolate; secure against being switched on again; no voltage notice; grounding and short-circuiting; cover or fence off adjacent live parts;
- Selection of the appropriate tools, measuring devices and, if necessary, personal protective equipment;
- Evaluation of the measurement results;
- Selection of electrical installation material to ensure switch-off conditions;
- IP protection levels;
- Installation of electrical installation material;
- Type of supply network (TN system, IT system, TI system) and the resulting connection conditions (classic zeroing, protective earthing, necessary additional measures, etc.).